

SEKURCABLE VERTICAL LIFELINE



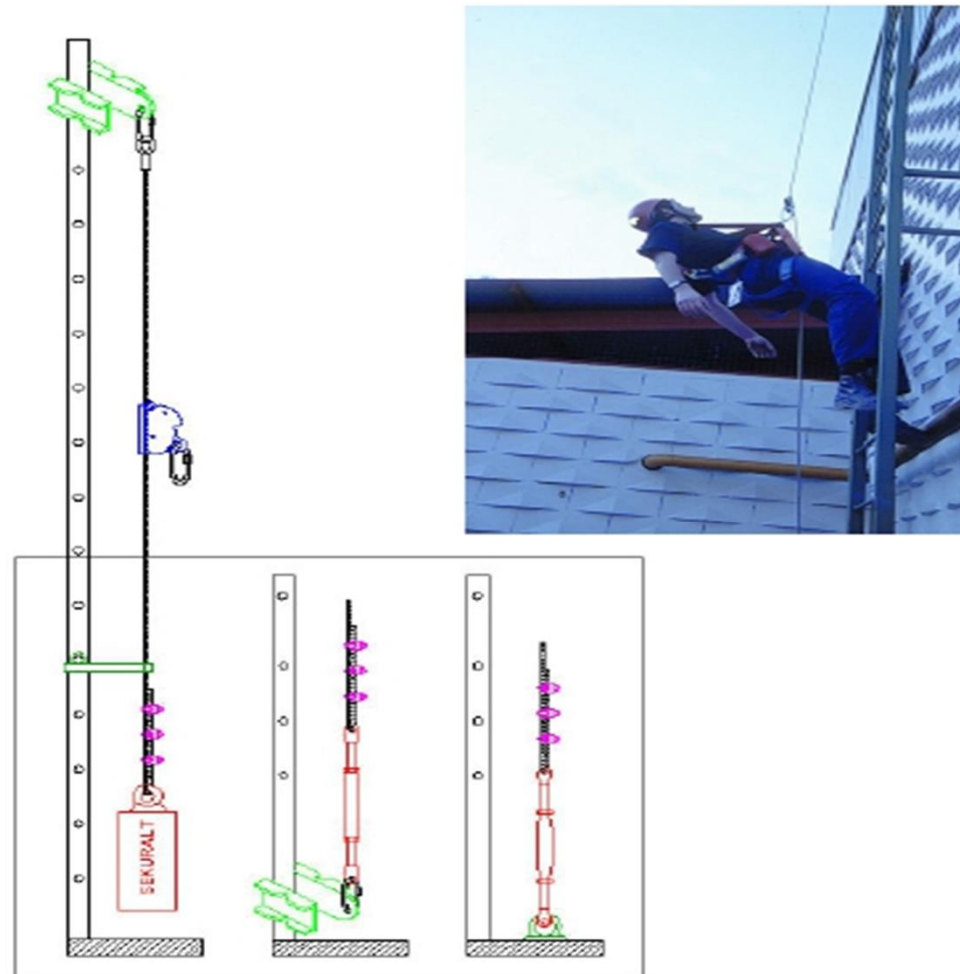
- “ Its purpose is to ensure people during the ascent and descent of stairs.
- “ A cable is extended along the entire length of the ladder, the cable serves as a support for the mobile fall arrest device that will be attached directly to the sternal harness anchorage point.
- “ The fall arrester automatically locks in case of fall.
- “ The Sekurcable life line is limited to the circulation of 1 user.



- “ The Sekurcable lifeline does not need an absorber either on the equipment itself or on the top of the line.
- “ The cable can be placed on the left, right or in the center.
- “ The lower anchor is only intended to ensure the tension of the cable, to allow a good operation of the system. It can be done by means of a fixed counterweight or anchorage point.
- “ It is certified according to Standard EN-353-1 / 2 + WG11 rfu11.073.



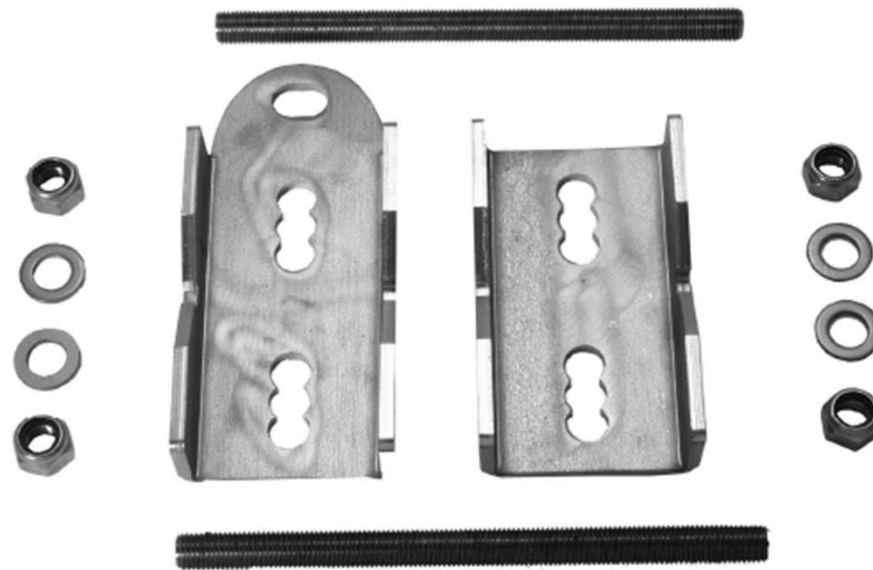
DESCRIPTION OF IRUDEK SEKURCABLE COMPONENTS



3 OPCIONES DE MONTAJE

UPPER / LOWER BRACKET

- “ Upper / lower support of the lifeline.
- “ Certified in accordance with EN 795.



“ We check the type of section and the recommended position.

ESCALERA VERTICAL

ANEXO 1

	FECHA	NOMBRE	FIRMAS	IRUDEK 2000	
DIBUJADO	02-10-02				
COMPROBADO					
ESCALA	POSICIONES PERFILES VERTICALES			LÍNEA Nº	
				LÁMINA Nº	001

ANEXO 2

	FECHA	NOMBRE	FIRMAS	IRUDEK 2000	
DIBUJADO	02-10-02				
COMPROBADO					
ESCALA	PERFILES SOPORTE MAXIMO Y MIN.			LÍNEA Nº	
				LÁMINA Nº	04

Example of assembly on a "L" section.

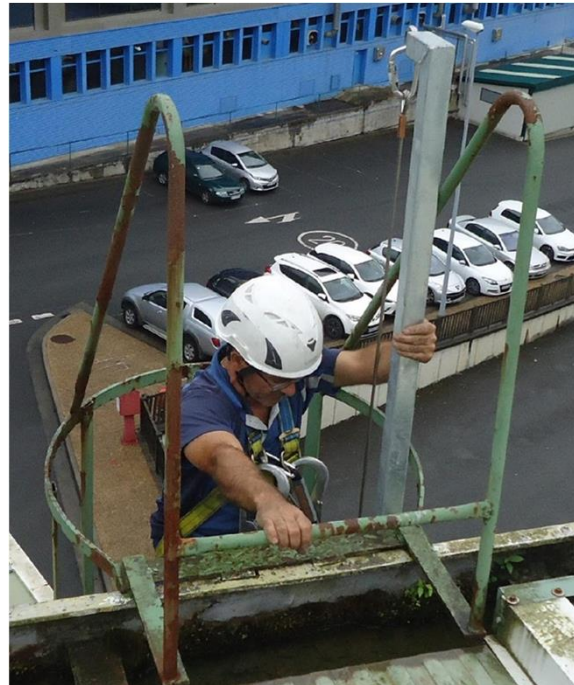


Example of assembly on a circular section.



UPPER EXTENDER BRACKET

1. It is installed at the top of the ladder to facilitate the disembarkation of the operator that is using the lifeline.
2. The ladder is embraced by 5 U-bolts and 2 counterplates

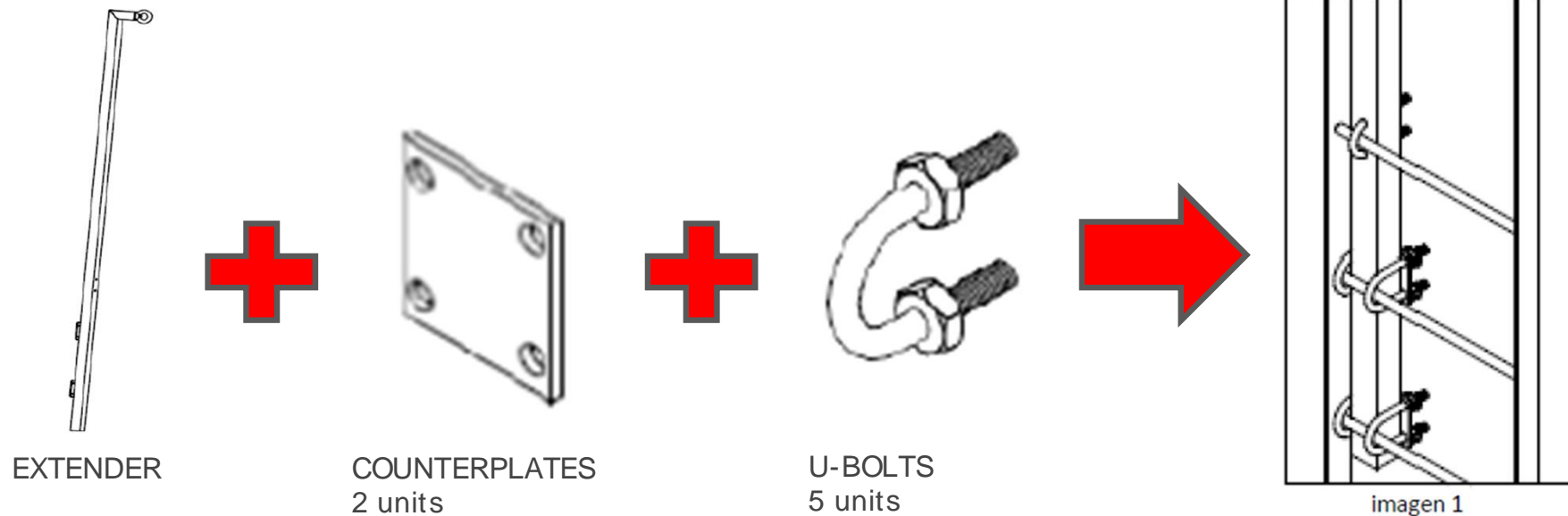


FIXING THE SUPERIOR EXTENSION CABLE

1. The extender is fixed behind the ladder with a U-bolt that is inserted on the tube itself.

This first fixing is done on the last step of the ladder.

2. Fix the extender to the next two steps using the 2 counterplates and 4 U-bolts (see image 1).



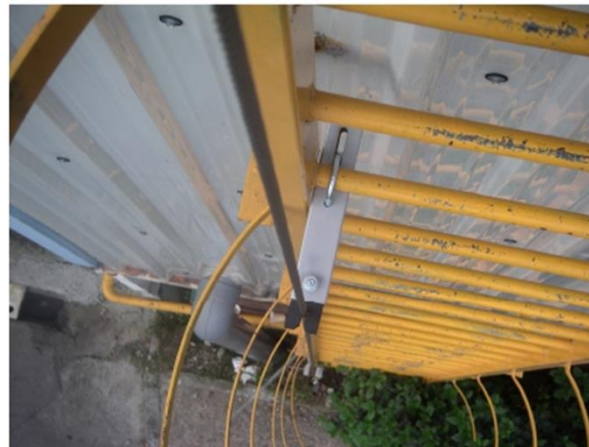
8MM STAINLESS CABLE

- ” 316 stainless steel
- ” Composition: 7x19 + 0 mm
- ” Resistance: 55 kN
- ” Check that there are no cuts.
- ” Avoid twisting the cable.
- ” Maximum inclination from vertical = 15°



STAINLESS STEEL WIRE ROPE GUIDE

- “ Intermediate supports.
- “ Maximum distance between guides = 10 metres.
- “ For indoor use.



WIRE ROPE GUIDE WITH SAFETY HOOK

- “ Intermediate supports for extreme conditions.
- “ Maximum distance between guides = 10 metres.
- “ Manufactured in stainless steel.



COUNTERWEIGHT

- “ Its function is to keep the lifeline in a vertical position.
- “ Weight = 7.5 kg.



Lower fixing with counterweight

1. Insert the wire rope through the counterweight ring
2. Secure the cable with 3 cable clips.
3. Cover the end of the cable with duct tape.
4. Fit the lower wire rope guide as close as possible to the counterweight.



CABLE TENSIONER M12

- “ Its function is to maintain the verticality of the lifeline.
- “ It is fixed to the ring of the lower bracket or to the anchor ring.



LOWER FIXING WITH WIRE ROPE GUIDE AND TENSIONER

1. Pass the wire rope through the fork of the tensioner.
2. Fix the wire rope using the 3 cable clips.
3. Turn the tensioner to tighten the lifeline and tighten the nuts.
4. Insert the 8mm cap into the cable.
5. Place the guarantee seal.



SKC EVO FALL ARRESTER

